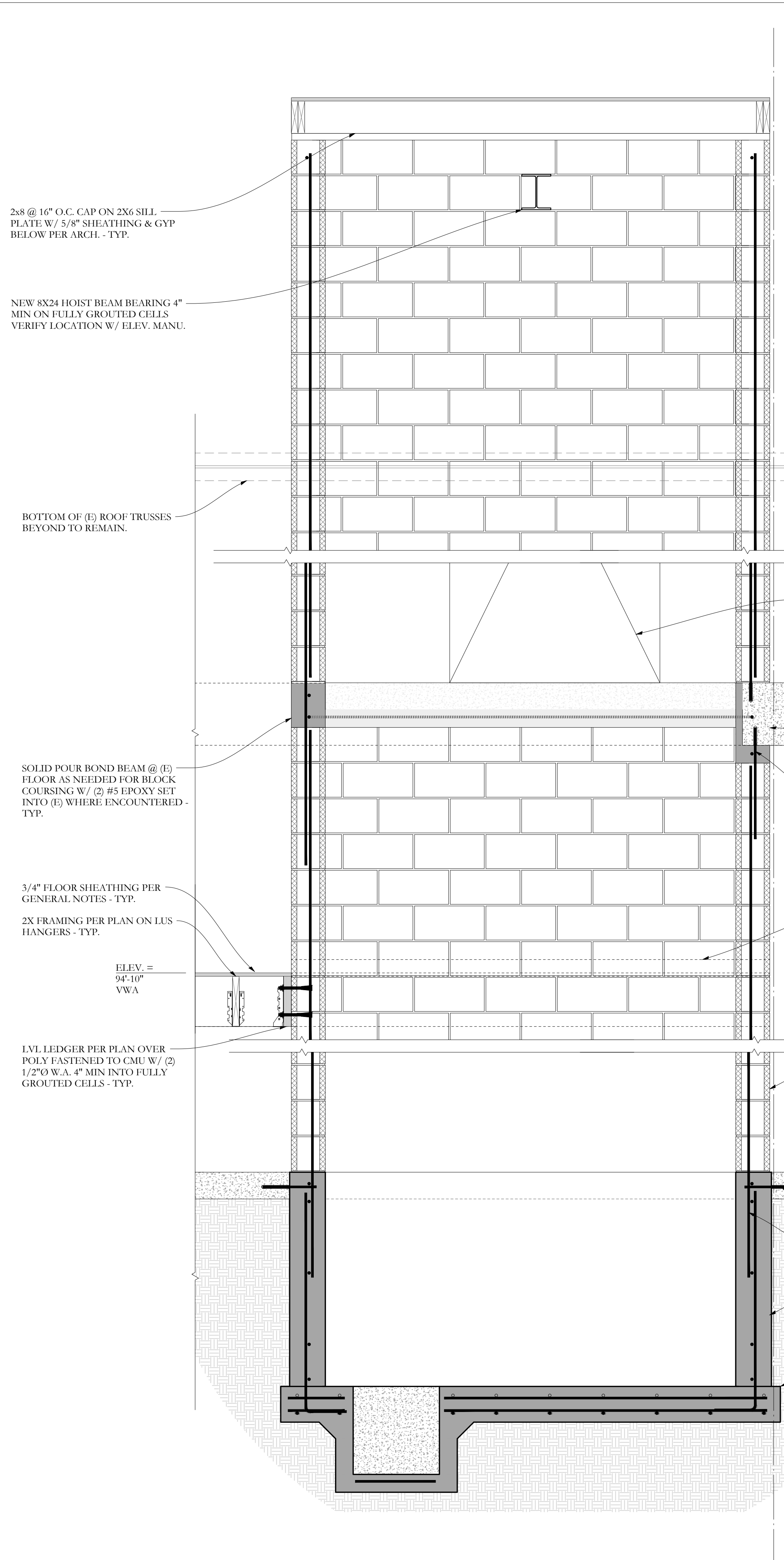
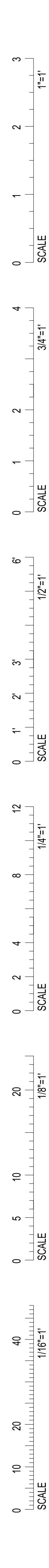


IF THIS SHEET IS NOT 24 X 36 IT IS A REDUCED SCALE PRINT - SCALE ACCORDINGLY



2x8 @ 16" O.C. CAP ON 2X6 SILL PLATE W/ 5/8" SHEATHING & GYP BELOW PER ARCH. - TYP.

NEW 8X24 HOIST BEAM BEARING 4" MIN ON FULLY GROUTED CELLS. VERIFY LOCATION W/ ELEV. MANU.

BOTTOM OF (E) ROOF TRUSSES BEYOND TO REMAIN.

SOLID POUR BOND BEAM @ (E) FLOOR AS NEEDED FOR BLOCK COURSING W/ (2) #5 EPOXY SET INTO (E) WHERE ENCOUNTERED - TYP.

3/4" FLOOR SHEATHING PER GENERAL NOTES - TYP.
2X FRAMING PER PLAN ON LUS HANGERS - TYP.

ELEV. = 94'-10" VWA

LVL LEDGER PER PLAN OVER POLY FASTENED TO CMU W/ (2) 1/2" Ø W.A. 4" MIN INTO FULLY GROUTED CELLS - TYP.

SECTION $\text{\textcircled{A}}$ $\frac{3}{4}''=1'-0''$

OPEN @ DOORS - SEE GENERAL NOTES FOR LINTEL SIZE - TYP.

(E) CIP CONCRETE FLOOR - SAW CUT (N) OPENING ONCE BEARING ON (N) CMU WALL BELOW. ELEV. = 100'-0"

CIP BEARING BEAM W/ (1) #5 CONT.

(E) CIP CONCRETE BEAM BEYOND - STEP CMU AS NEEDED FOR CLEARANCE & FORMED BEARING BEAM

#5 X 30" PINS @ 32" O.C. @ GROUDED CELLS - EPOXY SET 4" MIN. INTO (E) CIP FLOOR - TYP.

ENTRY LEVEL SLAB IN FOREGROUND

8" CMU ELEVATOR SHAFT W/ #5 VERTS IN GROUDED CELLS AT CORNERS, JAMBS AND 32" MAX. STD DUR-O-WALL LADDER REINFORCING @ 16" AND HORIZ. BOND BEAMS W/ (2) #4 CONT. @ 8'-0" MAX. AND AS SHOWN - TYP.

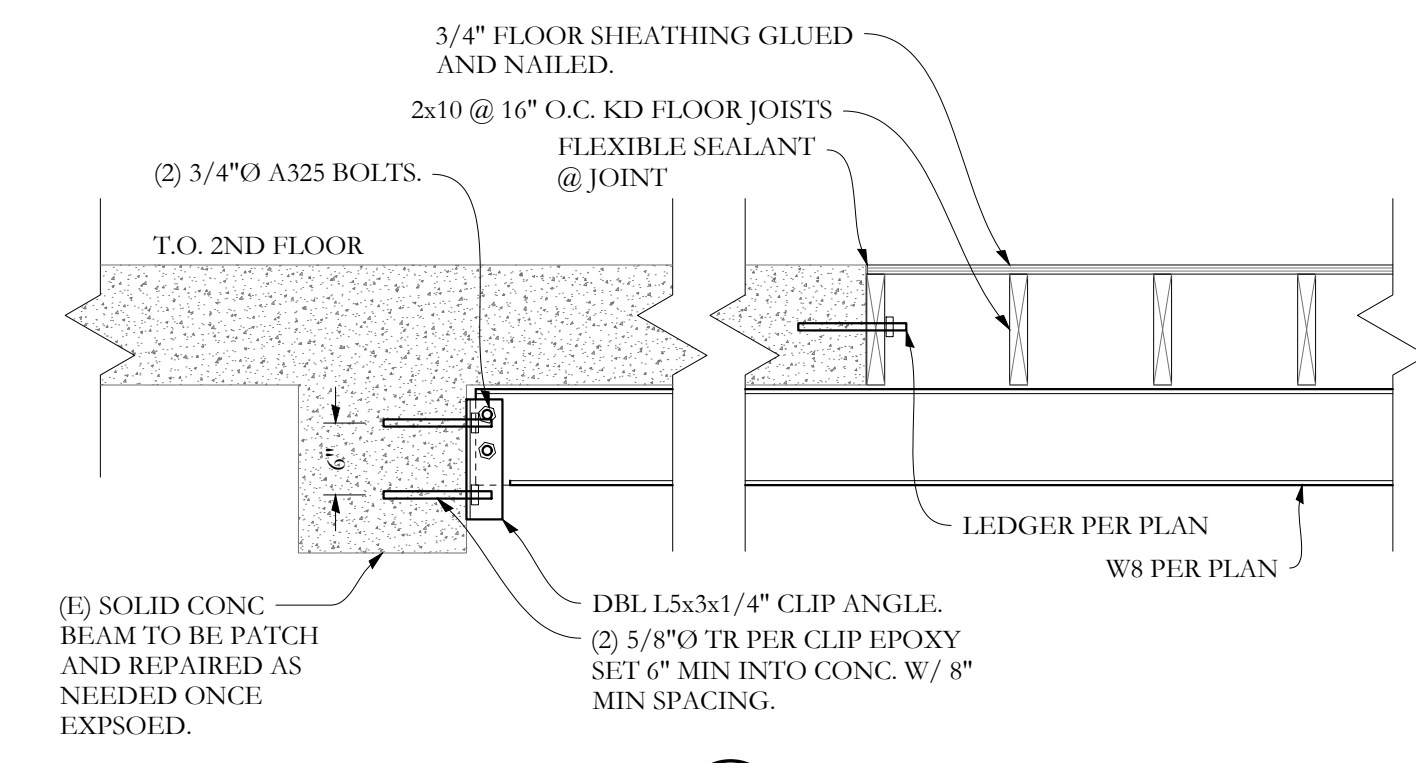
(E) SLAB ON GRADE SAW CUT @ (N) CIP PIT WALL. ELEV. = 87'-10"

#4 BAR EPOXY SET 6" MIN. INTO (E) SLAB @ 16" O.C. - TYP.

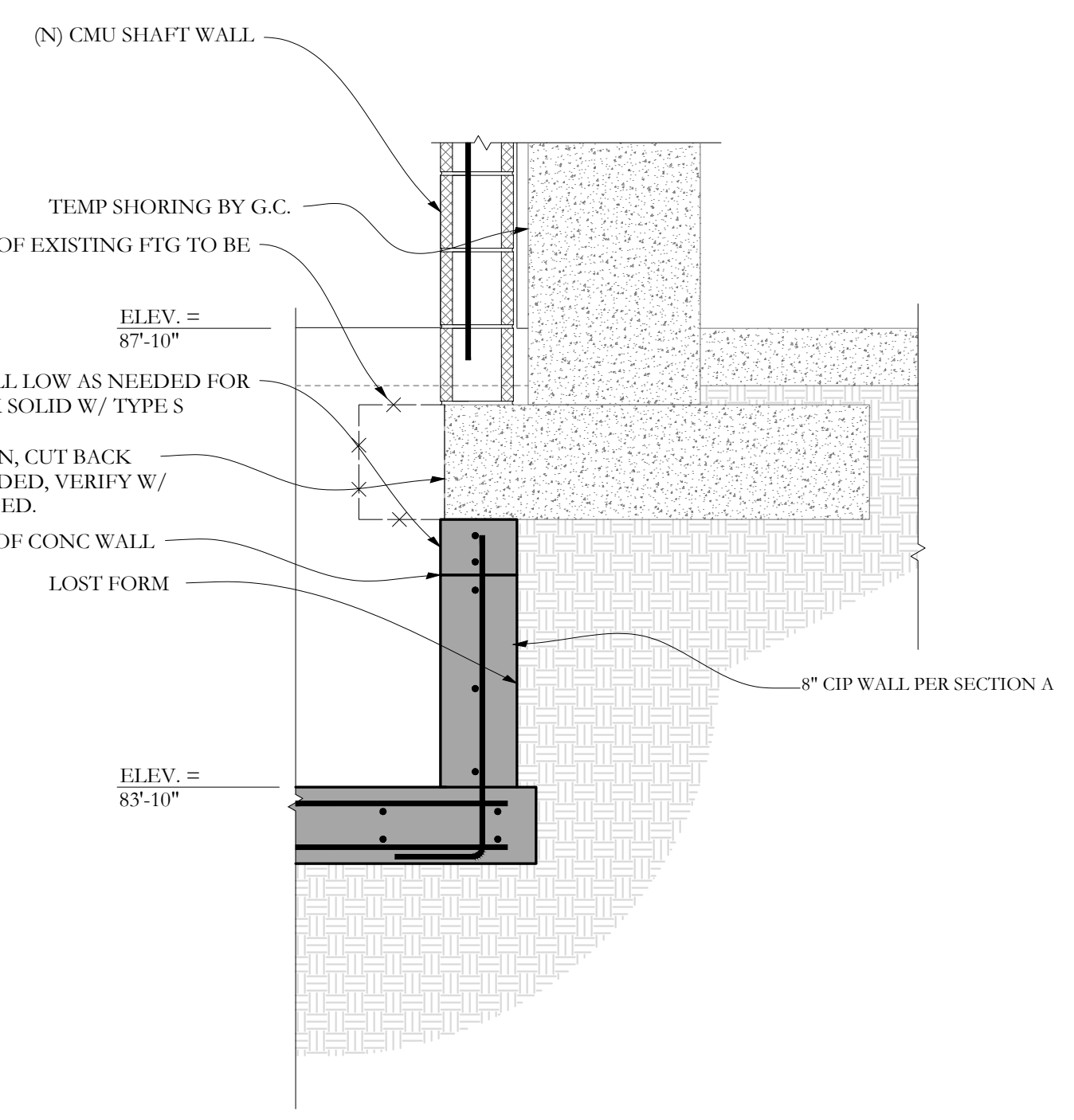
#4 BAR HOR. @ CMU VERTS. W/ 32" LAP

8" CIP WALL W/ #4 VERTS @ 32" O.C. & #4 HOR. @ 16" O.C. MAX. W/ 8" MIN. HOOK IN SLAB FOOTING

(N) 8" MIN. THICK SLAB FOOTING W/ #4 @ 12" O.C. E.W. TOP & BOT ON UNDISTURBED VIRGIN SOIL. ELEV. = 83'-10"



SECTION $\text{\textcircled{C}}$ $\frac{3}{4}''=1'-0''$



SECTION $\text{\textcircled{B}}$ $\frac{3}{4}''=1'-0''$



65 NEWBURY STREET
PORTLAND, ME 04101
207.761.9000
info@portcityarch.com
WWW.PORTCITYARCH.COM

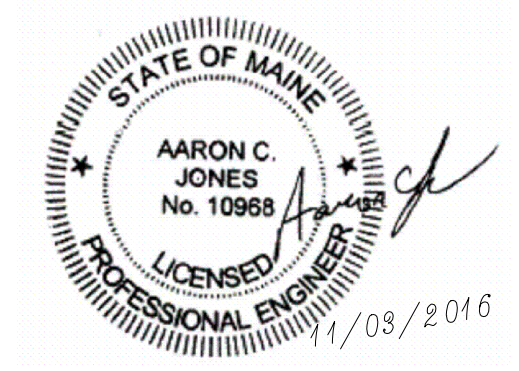
CONSULTANTS
Structural Integrity Consulting Engineers, Inc.
77 Oak Street
Portland, Maine 04101
(207) 774-4614
contact: Aaron C. Jones
aaron@structuralinteg.com

REVISIONS		
No.	Date	Description

ALTERATIONS
164 Middle St.
Portland, ME

Project Number 16007
Date Nov. 03, 2016
Drawn by MKL
Checked by

Sheet Name
SECTIONS



Structural Integrity
77 Oak Street
Portland, ME, 04101
p. 207-774-4614
e. 966-7037835
www.structuralinteg.com
BUILD WITH CONFIDENCE
© 2016 Structural Integrity Consulting Engineers, Inc.

S2.0

#16-0164